

BLACKFOOT CHALLENGE

Community-based Conservation

Photo by Meghan Brown



Photo by Randy Smith



Photo by John Salisbury



Photo by Meghan Brown

2011 Annual Report



**Better Rural Communities through
Cooperative Conservation**

Photo by Robb Kendrick

COMMUNITY-BASED CONSERVATION

BUILDING TRUST BY WORKING WITH ALL STAKEHOLDERS

The Blackfoot Challenge addresses rural values through a community-driven process that coordinates voluntary, incentive-based private land conservation, collaborative processes for public land management, and partner cooperation. Our approach is to provide regular communication between landowners and public resource managers in support of natural resource stewardship. The outcomes of community-based conservation are on-the-ground projects that leverage private, state, and federal partners, all of whom have a stake in the watershed.

Our mission is to coordinate efforts to conserve and enhance the natural resources and rural way of life in the Blackfoot Watershed for present and future generations.

Although the Challenge was established nearly 20 years ago, these conversations have been supporting the future of the watershed since the mid-1970s. During those early years, battling noxious weeds became a rallying point for landowners and land managers, a resource threat all agreed was important to address. By working together, participants saw how collaboration would build trust and lasting partnerships, and lead to on-the-ground accomplishments. After achieving success with weed management, partners expanded their work together to include other conservation opportunities facing the watershed. By focusing on shared values and supporting our work with good science, we built trust that we would accomplish more by working together.

Using this cooperative approach, we address issues where roughly 80 percent of us agree, build trust, and use that trust to work on the other 20 percent where we disagree. This consensus-based approach is most effective when everyone is at the table, both voicing their concerns and fully committing to listening to the concerns of others. It takes time to collaborate, but this deliberate process ensures partners don't get ahead of one another, that everyone is invited to participate, and that we accomplish more on the ground.

Join us in celebrating this year's community-based outcomes highlighted on the following pages.



Photo by Peter Brown



Photo by Teri Garrison

COMMUNITY-BASED CONSERVATION

- Is driven by community values
- Invites participation by all stakeholders, private and public
- Includes a coordinating framework
- Is supported by good science


PROCESS

The Blackfoot Challenge is a private non-profit organization. We are directed through a variety of committees and supporting work groups, each of which is chaired by a board member. As community members their volunteer effort is essential to providing effective long-term solutions and programs that benefit the Blackfoot and its communities. Since the inception of the Blackfoot Challenge, these committees have evolved along with the needs of the watershed.


COMMITTEES



WATER Balancing water needs and availability through shared sacrifice and water conservation



WILDLIFE Reducing human-wildlife conflict using preventative and proactive abatement strategies



WEEDS A holistic approach to controlling invasive and noxious weeds




FORESTRY Working to make forests healthier and communities safer from wildfire



EDUCATION Reaching all ages through place-based education



CONSERVATION STRATEGIES Keeping working landscapes intact by coordinating land conservation and stewardship



EXECUTIVE & OUTREACH Generating participation, sharing information, and transferring lessons learned

Inset photo by Randy Smith, circular photos clockwise from top right: Peter Brown, Robb Kendrick, Bruce Andre, Ali Duvall, Nancy Schwalm, Steve Kloetzel, Randy Smith.

BOARD

EXECUTIVE

Jim Stone Rolling Stone Ranch, Ovando Chair, Weeds Chair

Greg Neudecker US FWS Vice-Chair, Conservation Strategies Chair, Wildlife Chair

Denny Iverson Iverson Ranch, Potomac Treasurer, Forestry Chair

Amber Kamps USFS, Lincoln Secretary

David Mannix Mannix Brothers Ranch, Helmville Water Resources Chair

DIRECTORS

Brent Anderson Lincoln Landowner

Patrick Bannister Potomac Landowner

Caroline Byrd The Nature Conservancy

Andy Erickson E Bar L Guest Ranch, Greenough

Racene Friede Ovando Landowner, Education Chair

Todd Johnson Pyramid Mtn. Lumber, Seeley Lake

Tony Liane MT Department of Natural Resources and Conservation

Mack Long MT Fish, Wildlife & Parks

Tim Love US Forest Service, Seeley Lake

Jeff McNally Ovando Landowner

Joel Nelson Plum Creek Timber Company, Seeley Lake

Harry Poett Ovando Landowner, Drought Response Chair

Rich Torquemada Bureau of Land Management

STAFF

Gary Burnett Executive Director

Matt Arno Forestry

Traci Bignell Finance and Grants

Deb Dillree Clerical Support

Hank Goetz Lands Director

Brian McDonald Water, Weeds, Conservation Strategies

Sara Schmidt Outreach

Nancy Schwalm BCCA & Education

Brad Weltzien BCCA Land Steward

Seth Wilson Wildlife

Erin Zweiner Previous Coordinator

PARTICIPATION

CONSERVATION IN THE 21ST CENTURY

The Blackfoot Challenge is nationally recognized for our success in coordinating partnerships to conserve and enhance the natural resources and rural way of life in the Blackfoot Watershed of western Montana. But we realize that we are a small place in a big country, and so must build bridges outside our watershed to sustain our communities. Through a regional effort with the Working Lands Council in the Southern Crown of the Continent, and by participating with the national private landowner network Partners for Conservation; we hope to reach America's decision makers with solutions to keep land working for our communities.

While our communities are quite different from one another, what we share is extraordinary. We share a common love for the land and a strong desire to make a difference by caring to our families, communities and the landscapes we call home. We live in working landscapes that drive the economy of our communities. Maintaining the livelihoods of the people who live here and steward these lands is the key to protecting the conservation values that are so important to our community and the American people.

We achieve more by leveraging public and private resources with a community-based approach. People are beginning to listen to our simple messages:

Retain baseline funding for federal assistance that incentives voluntary, private landowner conservation in strategic landscapes and maintains a strong agricultural economy.

Support grass-roots initiatives with opportunities for federal agencies to partner in community-based and large-landscape conservation, and directly support community-based leadership.

"I do believe (the Blackfoot Watershed) is the birthplace of the conservation concept for the 21st century, so I'm very, very proud of you."

—KEN SALAZAR

U.S. SECRETARY OF INTERIOR
ON JULY 16, 2011 IN THE
BLACKFOOT WATERSHED

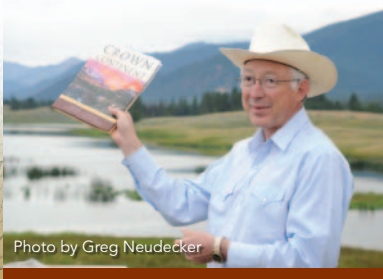


Photo by Greg Neudecker

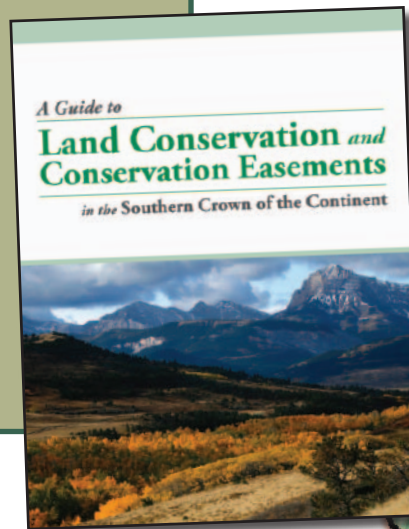
OUR STORIES

- The **Blackfoot Community Project** maintained 89,000 acres in working status in partnership with The Nature Conservancy of Montana and Plum Creek Timber Company, modeling **landscape-level conservation** by leveraging \$10 million of private funding with \$80 million in Land and Water Conservation Funds and other federal & state conservation funds.
- A partnership with the U.S. Natural Resources Conservation Service (NRCS) and North Powell Conservation District supports a **Land Steward** to **enhance private land** through the Environmental Quality Incentive Program.
- A Conservation Innovation Grant from NRCS **reduced program costs** for our carcass pick up program by nearly 75% and greatly **enhanced landowner participation**, and continues as a **partnership** with Montana Fish, Wildlife and Parks and agricultural producers.
- The Blackfoot Challenge has a long standing relationship with the U.S. Fish and Wildlife Service, Partners for Fish and Wildlife Program, which has **leveraged \$1,500,000 in federal support** and helped deliver a conservative estimate of **\$6 MM to on-the-ground** conservation outcomes.
- Support from the U.S. Bureau of Land Management and the Montana Department of Natural Resources and Conservation has leveraged **over \$1 million in cost-share** for weed management and fire management on private lands in coordination with public land stewardship.
- The Southwestern Crown Collaborative was one of the first ten projects funded nationally through the Forest Landscape Restoration Act. This collaborative effort between the USFS relies on a **1:1 match from federal, state and private** sources in addition to **partner leverage** that will **exceed \$50 million** over the ten year period.

WHAT ARE **Conserved Lands?**

Public land conserved by a public process that provides for multiple benefits to citizens. For example, lands now administered by Montana Fish, Wildlife and Parks resulting from the Montana Legacy Project.

Private land conserved by placement of a conservation easement where the development rights were voluntarily donated to and/or purchased by a conservation partner. For example, land managed by Blackfoot Community Conservation Area Council resulting from the Blackfoot Community Project.



CONSERVATION

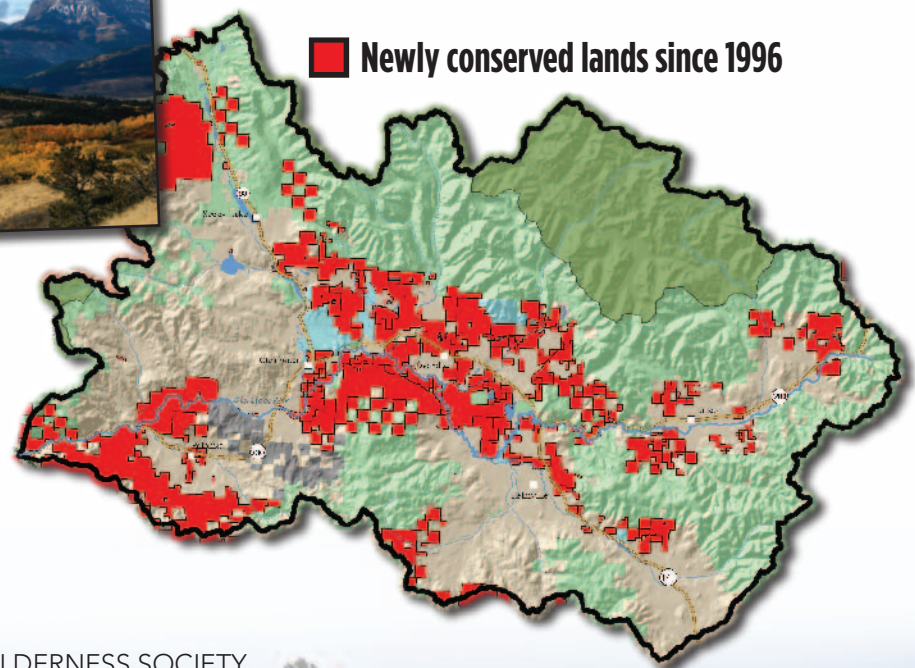
PARTNERSHIPS TO KEEP LANDSCAPES WORKING FOR ALL

In 2011, the Conservation Strategies program continued its efforts to keep working landscapes and the rural way of life in the Blackfoot Watershed intact by providing a forum for information sharing, identifying conservation easement partnership opportunities, and encouraging cooperative and adaptive management for lands under easement. To date, 231,795 acres in the Watershed have been conserved by private landowners, land trusts and public agencies.

2011 ACCOMPLISHMENTS

- Worked with 17 partners to develop a landowner guide to conservation easements focusing on the Southern Crown of the Continent
- Supported the placement of conservation easements on 907 acres in Patterson Prairie, Stonewall Creek, Nevada Creek, and Camas Creek

Of these acres, 72,246 are a direct result of the Blackfoot Community Project. Initiated in 2003, this project is a multi-partner effort to purchase 89,257 acres of Plum Creek Timber Company land in the watershed and sell it to private and public buyers. As a “home-grown” effort, the Project offers local residents the opportunity to guide the future management of this large tract of land.



“I am particularly proud of the conservation success in Montana’s Blackfoot Valley where **we worked together to protect working ranchlands and conservation values.**”

—**JAMIE WILLIAMS** PRESIDENT OF THE WILDERNESS SOCIETY



COOPERATIVE CONSERVATION ON THE GROUND

The **Blackfoot Community Conservation Area (BCCA)** is 5,600-acre community-managed area containing mid-elevation forests, native grasslands, and free flowing streams. As an important transition zone between wilderness, national forest and the productive valley bottom, the BCCA provides critical habitat for many native species and also serves as a hub of local recreational and economic opportunities. Formally established in 2005, a 15 member council meets monthly to discuss management of the natural and recreational resources.



2011 Recreational Motorized Vehicle Use Routes in the Blackfoot Community Conservation Area

- Recreational Motorized Vehicle Routes
- Administrative Routes (Gated)
- Seasonally Gated Roads
- Open Roads
- Other Non-Motorized Routes

2011 ACCOMPLISHMENTS

- Implementation of new Motorized Use Policy – 50 user groups pleased.
- Sprayed weeds on 140 acres of native parks and along roadways
- Thinned 40 acres of forested land
- Installed 2 bear-resistant food poles at popular campgrounds
- Held several educational tours



Photo by Brad Weltzien



Photo by Caroline Byrd

“Partnerships in the Blackfoot have brought people together to achieve great conservation. **It really takes everyone.** It takes time and there may be bumps in the road, but the work in the Blackfoot will endure as a remarkable example.”

—CAROLINE BYRD
THE NATURE CONSERVANCY

RESTORATION

LANDSCAPE-LEVEL PUBLIC AND PRIVATE RESTORATION

FOREST RESTORATION

We are working with public land management partners on forest restoration projects on public lands. Developing woody-biomass markets to utilize the by-products from fuels reduction, forest restoration and sustainable forestry supports these efforts and provides critical economic value and incentive to keep our forests healthy and our rural way of life intact.

- 76 contractors and partners participated in our forestry contractor workshop on April 19 and 20.
- Over 50 people attended a biomass utilization demonstration—coordinated by The Seeley-Swan, Blackfoot Biomass working group with Missoula Electric Coop, University of Montana and Paws Up Ranch—that put biomass energy on the electrical grid in the Blackfoot.
- Actively participated in committees of the Southwestern Crown Collaborative to create jobs, restore the 1.5 million acre landscape and benefit fire management.

“The Blackfoot Challenge provides valuable oversight, coordination and integration with multiple partners and contractors on National Forest Lands, while incorporating private landowner treatment opportunities.”

— **SHAWN HEINERT**
U.S. FOREST SERVICE,
LINCOLN RANGER DISTRICT



WEED MANAGEMENT

The Blackfoot Challenge played a critical role in 2011 aiding in the exchange of information and encouraging cooperative, cross-boundary efforts to combat invasive and noxious weeds. Integrated weed management practices were implemented on more than 12,000 acres throughout the Blackfoot Watershed with more than 40 miles of the Blackfoot River treated for leafy spurge across public and private ownerships.

- Treated yellow toadflax throughout 400 acres of Lake Creek
- Treated knapweed along 35 miles of State, County, and Plum Creek owned roads in the Clearwater valley and 1,250 acres in the Nevada-Ogden Mountain area
- Treated a variety of weeds along 15 miles of Forest Service roads in the Patterson Prairie Vegetation Management Area



- Supported weed mapping efforts in the Clearwater valley, the Clearwater River, the Blackfoot River, and newly acquired DNRC lands in Potomac
- Supported three volunteer weed management projects organized by the Bob Marshall Wilderness Foundation in Monture Creek and the North Fork Blackfoot River



STEWARDSHIP

MAINTAINING CONNECTIONS

FIRE

Our first priority is helping private landowners complete fuels reduction around homes, along access roads and around communities. We coordinate with the North Powell and Greenough/Potomac Fuels Mitigation Task Forces. These efforts compliment ongoing fire management treatments for state and federal lands. In the near future, we anticipate more opportunities to directly assist public land management agencies with fuels reduction projects on their lands.

- 73 acres of fuels reduction completed on private land around homes and along access roads.
- 36 acres and over 5 miles of road received a fuels reduction treatment in the highest priority area for the Greenough/Potomac Volunteer Fire Department.

WATER

The 2011 water year was one for the record books. Well above average snow pack kept stream flows high throughout the summer eliminating the need for the Drought Response. Abundant water was welcomed by all and allowed us to focus on our continued efforts to promote the efficient and sustainable use of energy and water resources through irrigation efficiency.

Irrigation Efficiency Program Results:

- 11 sprinkler system efficiency evaluations completed
- 420,000 kWh energy savings identified since 2008
- 175,000 kWh energy conserved/used more efficiently since 2008
- 1,200 irrigated acres scheduled for efficient water use

- 2,600 scheduled since 2008
- Hosted irrigation maintenance workshop
- Co-hosted meeting with Montana Water Court on Blackfoot Basin water rights preliminary decree

“Since man started tending cattle there have been times where someone needed to stay with the cattle to protect them. We have to thank the Challenge and partners for the range rider program.”

— **BOB ROWLAND** OVANDO RANCHER



Photo by Sara Schmidt

WILDLIFE

We continue to reduce grizzly bear-human conflicts and to proactively address wolf-livestock conflicts. Overall, grizzly bear conflicts remained low in the watershed despite extensive bear activity and a cool spring that pushed many bears into valley bottoms. There were two confirmed livestock losses and one cow injured by wolves. Our livestock carcass removal program, extensive system of electric fences and our wolf/livestock monitoring helped keep conflicts with carnivores low.

- 400 livestock carcasses removed and composted
- 14 electric fences on calving areas protecting livestock
- 2 new bear poles erected on Blackfoot Community Conservation Area
- 2 new radio collars deployed on resident wolf packs
- 3 wolf packs and 8 livestock herds intensively monitored by range riders
- Zero wolf depredations on livestock herds monitored by range riders



Photo by Seth Wilson



Photo by Seth Wilson



EDUCATION

SERVING ALL AGES

The Education Program works with local teachers, landowners, conservation organizations and agency partners to determine program topics and direction through our Education Committee and Teacher Steering Council. This year we reached more adults through our Community Education Programs than we have in the three years prior, engaging nearly 400 families in a diverse array of activities: from bird walks to bear movements, gardening workshops to geology and history tours, cooking classes to family fishing days. We also continued to deliver our signature youth-focused programs for nearly 300 students attending all eleven schools in the watershed.



2011 SUCCESSES

- **Youth Field Day** 70 4th-6th graders spent the day at Lubrecht Experimental Forest engaged in hands-on learning
- **Montana Natural Resources Youth Camp** 30 high school students spent a week immersed in the field gaining first-hand experience in natural resource management and stewardship.
- **Adopt-A-Swan School Program** 100 7th-8th grade students helped restore trumpeter swans to their traditional range.
- **13 Community Education Programs** serving 400 people - a new record!
- **Family Fishing Day** 100 people spent the day fishing in a traditional fishing access area in the upper watershed.

“Today’s students are our future, place-based learning in the outdoors not only increases comprehension but also **helps create better stewards of the land we live on.**”

—PATTI BARTLETT
7-8TH GRADE SCIENCE AND MATH
TEACHER, SEELEY LAKE ELEMENTARY



We continued our outreach efforts both inside and outside the watershed this year. We engaged nearly 3,000 individuals at the local, regional and national scales through events like our Partners Tour and Annual Members’ Meeting, as well as numerous presentations, public meetings and press releases.

A schedule of upcoming events can be located on our website calendar at www.blackfootchallenge.org



DONORS

Our **private and public donors and grantors** provide the funding for our work. The majority of projects are funded with state, federal, and foundation grants. Critical gifts from private individuals help us meet and match requirements for these project funds and provide the bulk of operating funds for committees.

We are thankful to the following individuals, organizations, businesses and foundations that truly care about the Blackfoot and its future. Their support in 2011 made our work possible.

Charlie & Sydne Abernathy • Gary Aitken • Allegra Print & Imaging • Bob & Gayle Anderson • Rob Anning in memory of Polk Laffoon • Anonymous (9) • Anonymous in honor of Jeremy & Mira • Matt & Melissa Arno • Patrick & Bernadette Bannister • Ken & Paula Barber • Tom & Karen Barbour in memory of Bonnie Lee Murphy • Jim & Norma Bauer • Margaret Baylor • Eldon & Helen Beck in honor of John, Jean, Ellie, Becky & Timmy Pocha • Big Blackfoot Chapter of Trout Unlimited • Jim & Carrie Bignell • Traci Bignell • Olof & Mary Billquist in memory of Otto & Ellen Billquist • Mark Bloucher in memory of Polk Laffoon • Ellen Blum • Jim & Sally Bogaert • Louie Bouma • Bryan & Meg Bradshaw • Stan & Glenda Bradshaw • Lee Brewster in memory of Polk Laffoon • Tom Browder & Carolyn Lewis • Bill & Linda Bucklin • Margaret Burback • Charles & Margaret Burback • Ralph & Toone Burchenal in memory of Polk Laffoon • Kathleen Burchett • US Bureau of Land Management • Gary & Wanda Burnett • Jerry & Laura Burns • Bob Bushnell • Jerry Cain • Jerry Cain in honor of Jerome M. & Elizabeth O. Cain • Dr. George Callard in memory of Polk Laffoon • John & Betty Cardwell • Mary Casey-Sturk in memory of Polk Laffoon • Lawrence & Elizabeth Casper • Hap & Susan Castleberry in memory of Polk Laffoon • Virginia Causey • Cinnabar Foundation • Clearwater Resource Council • Robert & Judith Clemons • Rich Clough • Dave Cochran • W. Preston & Mary Cooper • Margery Copenhaver in memory of Wendell Copenhaver • Jennifer Cote • Richard W. Crisler • Pat & Kathy Curran • Robert & Delores Curry in honor of Jim Stone • John & Cheryl Dale • Ty & Alyssa Daniels • Bill Davis • Montana Department of Environmental Quality • Larry & Debbie Dillree • Montana Department of Natural Resources & Conservation • Deutsch Bank Americas Foundation Matching Gift Program • Ducks Unlimited, Inc. • Pen & Liz Edwards • Tim Edwards & Gayle Hudgins • Andy & Connie Erickson • Kevin & Robin Ertl • John & Jan Farrar in memory of John Roe • David Fawcett in honor of the Vero, Potter & Stone Families • First Data Corporation Matching Gift Program in memory of Polk Laffoon • Five Valleys Land Trust • Patti Fogarty in memory of Bill Fogarty • Sam & Lisa Fowler in memory of Polk Laffoon • Racene Friede • Scott Frost & Valerie West in memory of John Roe • Tim & Sue Furey • Bill Geary • Pete Giese • Donna Goens • Hank & Cathy Goetz • Scott Gordon • Steve Kloetzel & Andrea Morgan-Greenwing Restoration • Bob & Patricia Griffes • Lyle & Gail Grimes Charitable Foundation • Bernie Hall in memory of John Roe • Patricia Hanna in memory of Polk Laffoon • R.S. Harrison in memory of Polk Laffoon • Gerard Hatheway • Randy & Donna Hawkins • Skip Hayes in memory of JoAnne Hayes • Joseph H. Head, Jr. in honor of Ralph & Toone Burchenal • Joseph H. Head, Jr. • Heart by Heart Ranch • Hi-Country Snack Foods, Inc. • Ralph & Billie Higgins • Dale & Yolanda Hinkle • Jack Hooker • Jack & Karen Hooker in memory of Virginia Jorgenson • Terrance & Christy Horan in memory of Polk Laffoon • Harry Houze • Jerry & Rochelle Hover • Linda Hugulet • Bud & Randy Hunter • Hurlburt Farm & Forestry, Inc. • Tom Ide & Shari Marigh in memory of Howard, Gene & Wendell Copenhaver • Ila B. Dousman Fund • Denny & Charlotte Iverson • Bob Johnson • Emery & Lorraine Johnson • Heather Johnson & Brad Andres • Todd & Twyla Johnson • Tammy Jordan • Martha Newell Kadas • Amber Kamps • Tim Kemp in honor of Harry & Cindy Poett • David & Kathy Kesheimer • Dr. E. A. Kindel in memory of Polk Laffoon • Charlie & Marcia Knell • Bob & Ellen Knight • Mike & Kathy Krug in memory of Polk Laffoon • Claire Kupferle in memory of Polk Laffoon • Polk Laffoon in honor of Ralph & Toone Burchenal • Lewis & Clark County • Tony Liane • Lincoln Institute of Land Policy • Land Lindberg in honor of Johnny Stone • Jerry Loendorf • Wendy Lofting in honor of Bill and Betty Potter • Gary Long in honor of Dorothy L. Long • Gary Long • Gary Long in memory of Tammy Lynn Long • Chris & Jeanne Lorentz in memory of Charles R. Totebusch, Jr. • Lovett-Woodsum Charitable Foundation, Inc. • Greg Low • Ernie & Renee Lundberg • Fred Lurie • Walter Lynn in honor of the Mannix Family • Lydia Macauley • Malibu Kayaks-Michael Colikas • Mannix Bros, Inc. • Rem & Diane Mannix • Les & Rita Marcum • Traci Mardock in honor of Claire Kelley • Bruce Margolius • Jerry & Sharon Marks • Phil Mason • Bill Masee • Dan Masee •

Howard May • Brian & Tyra McDonald • Randall McDonald • Russell & Mary Ellen McDonald • Don & Barb McNally • Eloise McNally • Eloise McNally in memory of John Delano • Ted & Kim Mead • Vince Meng • Meredith Ranch • Neil Meyer • Microsoft Matching Gifts Program • Monty & Betty Miller • Ernie Minor in memory of Polk Laffoon • Missoula County • M.J. Murdock Charitable Trust • Montana Community Foundation • Montana Land Reliance • Montana Outdoors • Morris Ranch-Corie & Laurice Fritz • Montana Fish, Wildlife & Parks • Mark & Bonnie Christian -MT Poverty Water Well Drilling • National Fish & Wildlife Foundation • National Wildlife Refuge Association • Native Solutions Restoration-Michael Pecora • Tim & Karen Neel • Jim & Fay Nelson • Doris Neudecker • Nevada Creek Ranch-Tom & Sheila Hatch • James Newman in memory of Polk Laffoon • Stan & Colleen Nicholson • North Powell Conservation District • Northern Rockies Conservation Cooperative • Tom & Pat Nygren • Phillip Oakenshield-Eko Compost • Andrew & Karen Oberg • Jerry & Deborah O'Connell • Susan O'Connor • Roy O'Connor • Dave Odell in honor of the Doug Persico Family • Jill Perelman • Mike & Gay Peterson • Philanthropy Northwest • Plum Creek Foundation • Plum Creek Timber Company • Harry & Cindy Poett in honor of Jim Stone • Harry & Cindy Poett • Wym & Rob Portman in memory of Polk Laffoon • Powell County • Ken & Pam Price • Prickly Pear Land Trust • Jay & Kay Proops • Tollie Pugh in memory of Polk Laffoon • Wendell Rafter in memory of Bod & Dee Rafter • Wendell Rafter in memory of Delores Holgate • Gates & Margery Richards in memory of Polk Laffoon • Bruce Richardson-Finnish Lumber Corp. • Roy Riedinger in honor of Ralph & Toone Burchenal • Roy Riedinger in memory of Polk Laffoon • Rocky Mountain Elk Foundation • Sandra Roe • Sandra Roe in memory of John Roe • Chris & Natalie Rood in memory of Polk Laffoon • Kathie Roos & Neal Blossom • Paul & Carolyn Roos • Edward Rosenthal • Bob & Dawn Rowland • John Ruthven in memory of Polk Laffoon • Mary Savina • Gene & Carla Schade • Janelle Schiller in memory of Richard Schiller • Sara Schmidt • Ezra & Nancy Schwalm • Dr. Stephen Seninger • Bartow & Victoria Shaw in memory of Polk Laffoon • Bob & Nancy Shaw • Hugh & Barbara Sheehy • Ron & Addie Shields • Dennis & Kathy Shells in memory of Polk Laffoon • Brian & Karen Sippy • TCR, LLC • Ty & Alivia Smith • State of Montana • Wade & Diana Stitt • Glendon & Joy Stocking • Steve & Virginia Stocks • Jim & Margaret Stoehr in memory of Polk Laffoon • Jim & Colleen Stone in honor of Brian & Karen Sippy • John & Jane Stone • Stuart & Melissa Strahl in honor of Jim Stone • Bill Sullivan • Sustainable Northwest • Swan Valley Ecosystem Mgmt. Center • Sarah Swanberg & Robert Purcell • Tim Swanberg & Elaine Caton in memory of Irma Caton • Randy & Sharon Teague • The Brainerd Foundation • The Minneapolis Foundation • The Nature Conservancy of Montana • The Trust for Public Land • The Vital Ground • Robin Tokmakian in memory of Barbara Haines Tokmakian & Roscoe Haines • Rich Torquemada & Cherie Peacock • Christine Tull in memory of Polk Laffoon • Evie Ugrin • University of Montana-MSU Bandy Ranch • US Bank • US Fish & Wildlife Service • US Forest Service • US Natural Resources Conservation Service • Fred & LeighAnn Valiton • Valmont Industries, Inc. • Louis & Mary Vero in honor of CW03 Emmanuel Vero, US Army Afghanistan • Klaus & Beate von Stutterheim • Gary Wachs in memory of Polk Laffoon • Clifford & Anne Wagner in memory of Polk Laffoon • Vicki Watson • Douglas Webber & Nancy Winslow • Brad & Corbin Weltzien • Gary & Beverly Weltzien • Western Assoc. of F&W Agencies • Caleb & Bunny Whitaker in memory of Polk Laffoon • Jamie & Florence Williams • Charles & Elinor Williamson in memory of Bud Moore • Mark Wilms & Noreen Walsh • Seth Wilson & Jennifer Ellis in memory of Margaret Ellis • Matt Wimmer • Gary & Rita Wolfe in honor of Jim, Colleen & Brady Stone

We acknowledge the many photographs and in-kind donations we received throughout the year and extend our gratitude. We strive to list each and every donor accurately, but errors and omissions may occur. We apologize if we missed you. If you notice an error, please contact us at (406) 793-3900.

FINANCIALS

The Board of Directors manages the Blackfoot Challenge's finances by approving an annual operating budget funded from secured sources. Accounted for separately from the annual budget, the Board invests four reserve funds and three endowments for long-term stability through oversight from the Finance and Endowment Committee. These investments provide future support to benefit the Blackfoot Watershed. The BCP Operating fund, a cash fund, provides for the short-term needs of the Blackfoot Community Conservation Area until the endowment funds provide sustainable annual allocations. The Committee takes a conservative approach to investments.

"In my role in the conservation and restoration world I can say unequivocally that the leadership example set by the Challenge is unparalleled on a watershed basis across the nation. **I'm proud to be both a supporter and a participant.**"

—FRED DANFORTH
ECOSYSTEM INVESTMENT PARTNERS

STATEMENT OF FINANCIAL POSITION (Dec 31, 2011)

ASSETS

UNRESTRICTED

Annual Reserve	\$ 13,122
Designated Program Reserve	\$ 28,174
Board Designated Operating Fund	\$ 109,112
BCP Operating Fund	\$ 182,739

TEMPORARY RESTRICTED

\$ 168,851

PERMANENTLY RESTRICTED

Blackfoot Stewardship Endowment Fund	\$ 500,099
BCCA Endowment Fund	\$ 310,667
Endowment Fund	\$ 8,938

BLACKFOOT COMMUNITY CONSERVATION AREA (LAND)

\$ 1,891,284

TOTAL ASSETS

\$ 3,212,986

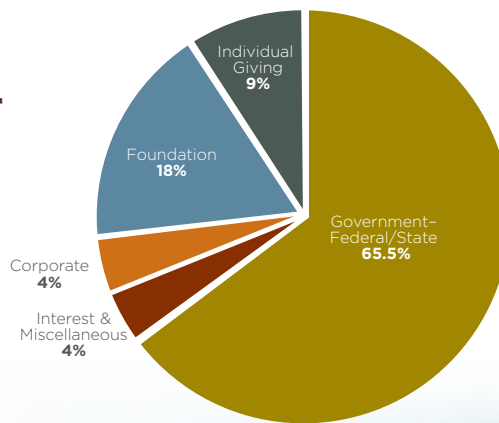
TOTAL LIABILITIES

\$ 0

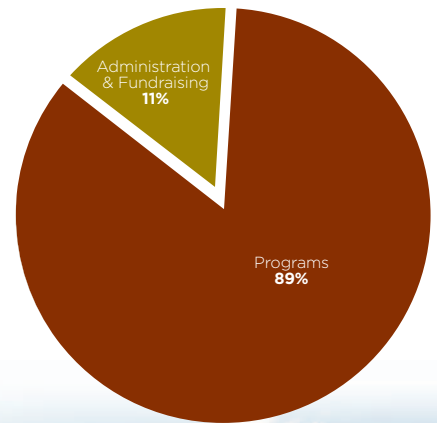
TOTAL NET ASSETS

\$3,212,986

SOURCE OF FUNDS



USE OF FUNDS





P.O. Box 103
Ovando, Montana 59854

NON-PROFIT ORG.
U.S. POSTAGE
PAID
OVANDO, MT 59854
PERMIT NO. 103

Community-based Conservation

**Better Rural Communities through
Cooperative Conservation**

Photo by John Salisbury